

VIKTRON HOMES





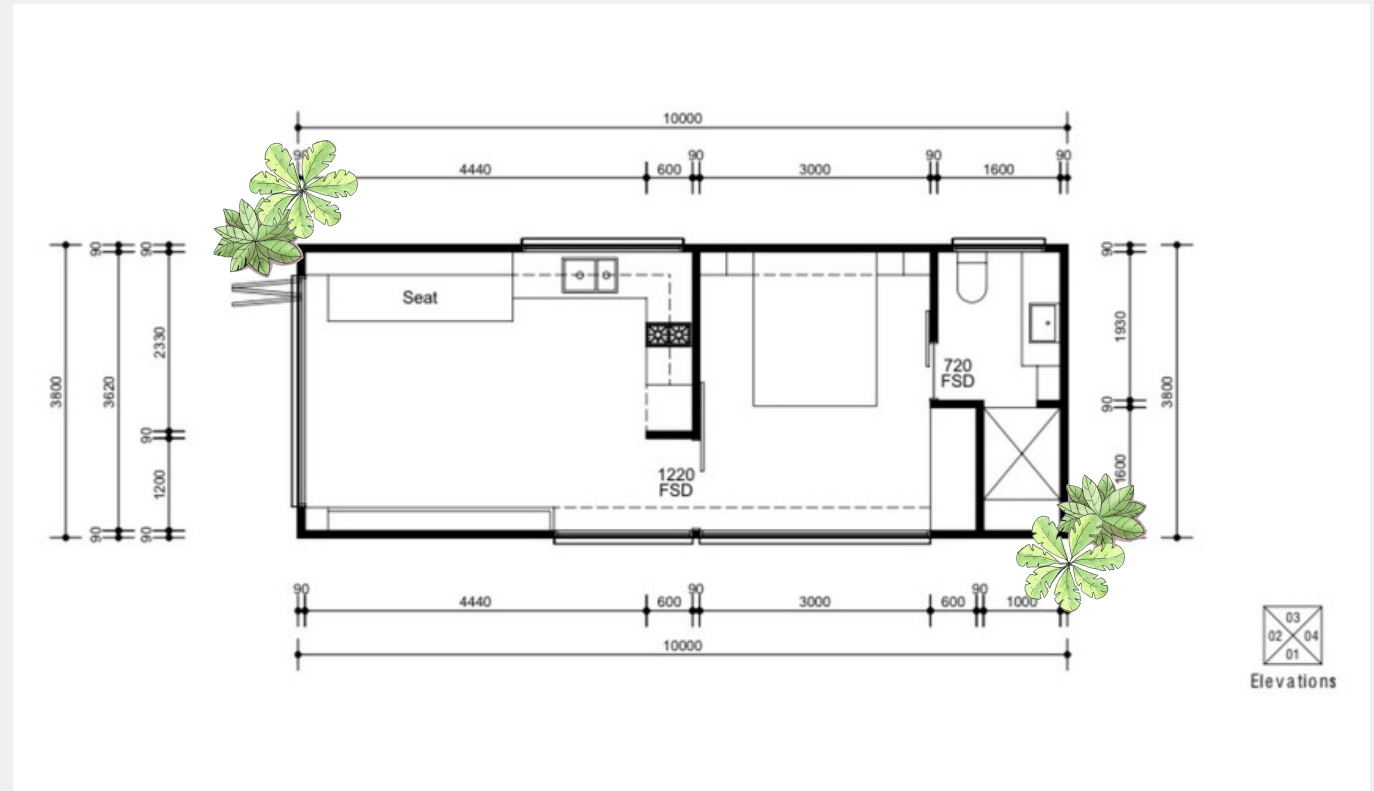
Scan the QR code to watch a video of our display



MODEL 1

Introducing our 'Model 1', a stunning one-bedroom modular home from Viktron Homes. This home features a gabled ceiling that adds a modern farmhouse charm to its aesthetic appeal; maximizing vertical space and creating a spacious feel inside the home.

The Model 1 is equipped with a living room, full kitchen, bedroom, and ensuite with a washing machine cavity space. The floor-to-ceiling windows and sliding doors provide plenty of natural light and ventilation, perfect for enjoying a beautiful view.



Overview

Area	36m ²
Length	10m
Width	3.6m
Height	3-3.5m

Certifications

BAL (Bushfire Attack Level) assessment approved

Structural steel beam designed for a maximum wind speed of an N4 or C2 site



Standard Inclusions

Structural features

- Galvanised structural steel

Kitchen

- 20mm engineered stone bench tops
- Laminated veneer cabinetry and panels with matte black handles
- Blum soft-close joinery
- Glass splashback
- Franke 580 x 450 stainless steel under-mount kitchen sink
- Bezzoni mixer
- 600mm multi-function oven with LED digital clock and 5 cooking functions
- 300mm ceramic cooktop 2 cooking zones
- 600mm undermount rangehood
- 600mm Fisher & Paykel dishwasher drawer
- Dedicated microwave and fridge cavity space
- Cutlery insert

Bathroom

- 20mm engineered stone bench tops
- Laminated veneer cabinetry and panels with matte black handles
- Blum soft-close joinery
- 600mm round frameless mirror with LED sensors above vanity
- Arcisan under-mount basin with overflow
- Bezzoni mixers, robe hook and toilet roll holder and flush plate
- Bezzoni stream shower rail combo
- 300 x 600 white wall tiles
- Featured tiles on the feature wall and niche
- 80mm inwall cistern with rimless wall-faced pan
- Exhaust fan
- Dedicated washing machine cavity space

Bedroom

- 20mm engineered stone bench tops for in-built bedside tables
- Laminated veneer cabinetry and panels with matte black handles
- Blum soft-close joinery
- Optional custom built Queen Bed with pullout storage

Lighting and electrical

- Energy-efficient LED lights
- Exterior wall lights
- Clipsal powerpoints and light switches
- Haier air conditioning unit to living room
- 50 inch ceiling fans in living room and bedroom
- Smoke alarms

Windows, doors and flooring

- Double glazed windows and sliding doors finished in commercial frames
- Blockout blinds throughout
- Barn-style door in bedroom
- Fly screens to doors and windows
- Hybrid flooring throughout
- 600 x 600 floor tiles to bathroom

Exterior

- 25mm premium Unicote Lux Nailstrip panels
- 75mm insulated roofing panels
- Extra heavy duty 'Firesark' sarking
- Under floor 75mm Bradford Supersteel insulation
- R 2.0 75mm high performance Earthwool butts

VIKTRON HOMES

Experience the Viktron difference

Contact Us

4/52 Blanck St, Ormeau
QLD 4208

Phone 0404 492 150

Email info@viktronhomes.com.au

Visit viktronhomes.com.au